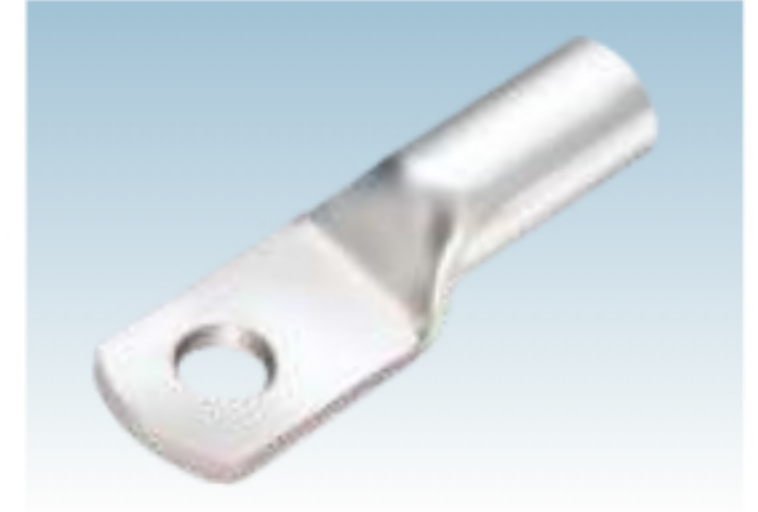
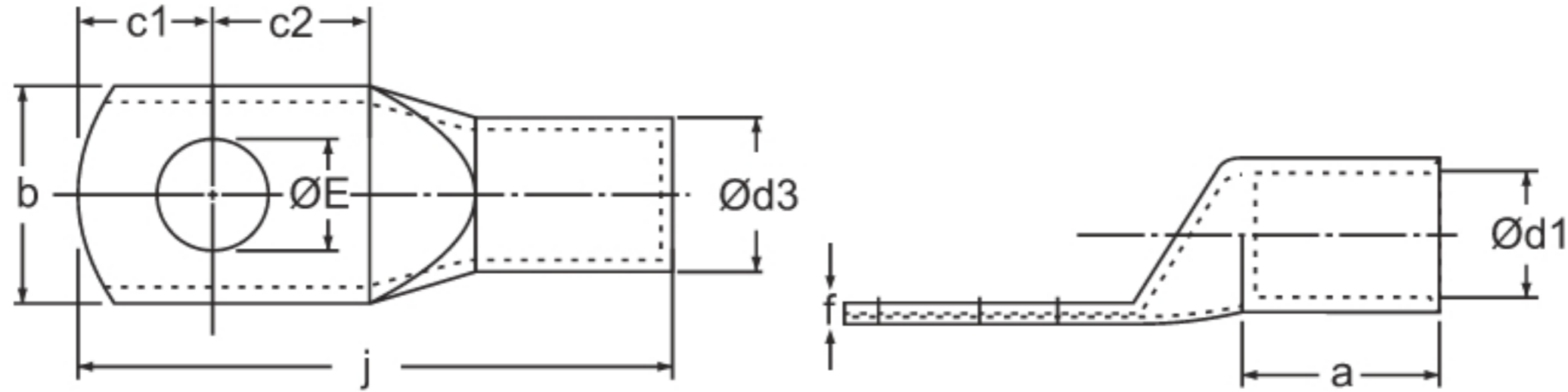


# COMET COPPER TUBULAR TERMINALS HEAVY DUTY ( LONG BARREL)



Size mm <sup>2</sup>	ØE	a	b	c1	c2	Ød1	Ød3	f	j	COMET CAT NO.
25-8	M8	16	13	8	12	7.0	9.0	2.0	41	CCUS-282
35-8	M8	20	15	9	14	8.0	10.6	2.6	48	CCUS-283
50-8	M8	26	17	10	16	9.2	12.2	3.0	59	CCUS-284
70-10	M10	28	20	12	19	11.5	15.0	3.5	66	CCUS-285
95-12	M12	32	24	12	20	12.8	17.0	4.2	74	CCUS-286
120-12	M12	35	28	14	23	14.8	19.6	4.8	82	CCUS-287
150-12	M12	38	30	14	24	16.0	21.2	5.2	86	CCUS-288
185-12	M12	43	34	17	23	18.0	24.0	6.0	95	CCUS-289
240-16	M16	50	40	20	30	22.0	28.0	6.0	112	CCUS-290
300-16	M16	55	43	24	27	23.5	30.0	6.5	120	CCUS-291
400-20	M20	60	50	24	36	28.0	36.0	8.0	140	CCUS-292

MATERIAL: COPPER IS - 191

FINISH : ELECTRO TINNED